



YOUR NEWS FROM

SLINFOLD PARISH COUNCIL



HELLO
from the new
Parish Council Chair

**THE BEST
WOODLAND
WALKS**
Enjoy the great
outdoors this summer

**THE CRICKET
PAVILION**
State-of-the-art new
facility for the village

Welcome to the summer issue of Parish Council News for 2023. This newsletter is delivered to every household in the Parish (around 900) and aims to keep all residents in touch with matters that may be of interest, including Parish Council activity and forthcoming meetings.

JUNE 2023 BI-ANNUAL NEWSLETTER

| | |
|--------------------|----|
| CONTENTS | |
| THE PARISH COUNCIL | 02 |
| WHAT'S ON | 03 |
| LOCAL NEWS | 04 |
| THE PAVILION | 05 |
| PREVIOUS EVENTS | 06 |
| THE CORONATION | 07 |
| WOODLAND WALKS | 08 |
| HIGHWAYS | 09 |
| ADVICE | 10 |
| BROADBAND | 11 |
| DIARY DATES | 12 |



YOUR PARISH COUNCIL

PARISH COUNCIL TEAM UPDATES

2023 saw the beginning of the tenure for a new Parish Council Chairman, Adrian Roberts, and a new clerking team, Mike and Samantha. Here in this newsletter, they take the time to introduce themselves and what has been happening in the Council.

Hello

From the new Parish Council Chair, Adrian Roberts



It's a real pleasure to introduce myself as the Chair of Slinfold Parish Council – a role that I took on at the start of the year after Neil Beer decided to 'hang up his boots'. At this point, I'd like to thank Neil for doing such an exemplary job over the past 5 years or so. I clearly have big shoes to fill, but I have benefited from sitting through most of his meetings, so hopefully some of his good practice will have rubbed off.

My wife, Karen, and I moved to the village eight years ago, and we both consider ourselves very lucky to live in such a beautiful place, with an active community and lots going on throughout the year. It is that sense of belonging that motivates me to work with a great bunch of like-minded colleagues on the Parish Council, to keep our parish looking great and to champion Slinfold as one of West Sussex's most beautiful places to live, work and visit; and thereby support our lovely pub, shop, church, and various clubs & events etc. This is important in my view, to keep our village assets alive and to promote

them as widely as possible, so that we don't go down the same road as so many other small villages across the UK.

I am proud of the many achievements that our Parish Council has delivered in recent years and the real sense of determination to 'get things done' that exists amongst the team; with many projects in the pipeline, such as uplifts to the football club/ community shed and the village shop, to name just a couple.

I'm also very proud of the close relationship that the Parish Council has with the wider cohort of volunteers in our parish who give so much time and effort for the benefit of others in our community.

Looking forwards then, I am confident that this Parish Council team will continue to represent parishioners in a proactive and proportionate manner across the many interests that it manages on your behalf; and, if after reading this you fancy joining us, there are a couple of vacancies as I write – so come on, don't be shy!

Clerk's Corner

Mike Simpson

Hi, I am your new Parish Clerk, Mike, and I have been clerking with local Parish Councils for four years.

Lots has been happening in the last couple of months. The Council is close to starting work on disabled access and a new patio for the football club, as well as upgrading the electrics at Slinfold Stores. The defibrillator at the shop has been serviced and a new case has been purchased, which now has an access code instead of a key. The drains and gullies in Hayes Lane have been cleared and a tree survey for the whole parish has been carried out, which will inform us of which trees need work.

In May there were two meetings, which we hope you attended: The Annual Meeting of the Council on 25th May, at which the Council carried out a number of formal procedures, and the Annual Meeting of the Parish, where we heard what local organisations have been up to and enjoyed a drink together.

You can call or email me if you have issues or questions to discuss:
Call: 07894 858048,
Email: clerk@slinfold-pc.gov.uk

Working with me is Sam, who you can contact in my absence on
deputy.clerk@slinfold-pc.gov.uk

We look forward to working with this lovely Parish.

If you have something that you would like to see in the next edition, which will come out in the winter, please contact the Parish Clerk (contact details are on the back page).



WHAT'S ON

Slinfold Indoor Market

The Slinfold Indoor Market has been running for about 18 months now and we must thank all the stallholders, visitors and helpers for making it such an enduring success!

Every month, we have a hall full of varied (mainly) handmade items for sale as well as fundraising stalls and refreshments on offer. You can pop in for a cup of tea and slice of cake, if not for lunch and a catch up.

All the profits we make are donated to charity - currently the Slinfold Scout Group are our beneficiaries and we have raised a few thousand pounds so far.

For more details, contact Jane Slipper. The Indoor Market is in the Village Hall, every third Saturday of the month, 10am-2pm and we would be delighted to see you there!

4THEYOUTH

Slinfold Youth Club Come Along!

The Parish Council are proud to support the Slinfold Youth Club, which is run by 4TheYouth and supported by people from the local community, as well as some young leaders.

We average attendance of 25-30 young people from Year 5 upwards and have lots of activities running every week. We run a tuck shop and have table tennis, board games, football table, karaoke machine and a gaming console as well as art-based activities.

Contact Jane Slipper for more details or come along to the Village Hall on a Friday evening 6:30-8pm in term-time only.

We are always on the lookout for new helpers so please get in touch!



Slinfold Scout Group

Slinfold Scout Group recently took part in the 'Great Tommy Sleepout' This was to be a whole group, one night only, sponsored camp in March, purposely chosen to be then because it is rather cold!

We raised money for the Royal British Legion, so that they can support Homeless veterans and their families and gave the Beavers, Cubs and Scouts just

a small taste of what it would be like to be homeless and out in the cold. Sadly we had to make the decision to postpone it because the very windy weather at that time made it unsafe to sleep in tents and instead it took place on the 28th May.

Not as cold as it would have been in March, but the intent behind it was the same. At the time of writing, we had raised in excess of £1000.

If anyone wishes to make a donation to this very worthy cause, our just giving page is www.justgiving.com/fundraising/slinfold-scout-group

Kayla Glover, GSL Slinfold Scout Group, gslslinfold@horshamscouts.com



Cosy Café Continues!

We are delighted that our Cosy Café concept has been so warmly supported by all ages in the Parish!

We have had such a good attendance and offers of help to run the Café that we have been able to keep the Café open beyond the Winter months it was intended for.

The Café is open at the Village Hall every Wednesday afternoon from 1-5pm and offers refreshments with a lunchtime menu and cake. The Café is sponsored by the Parish Council, but we do accept donations of money or cake to help us keep the venture running.

Please contact Councillor Jane Slipper for more details. Or pop by - we are open to all and you are very welcome!





PUBLIC OPEN SPACES IN THE PARISH - Perfect For Summer Days!

There are many areas where parishioners can relax outside and engage in fun outdoor activities. King George V Playing Fields is located between the Scout Hut and The Grattons and has recently been refurbished with many items of play equipment, a basketball court (bring your own ball!) and space to run / scooter / cycle around.

Six Acres has a play area near the block of flats and is aimed for under 5-year-olds - this area is planned to be refurbished soon. Six Acres also has a kickabout area, near the Downs Link, which is open for the public to use.

Cherry Tree (where the football and tennis clubs are situated) have some public open spaces as well as the football training pitch, which is open for all to kick about when the football team are not in residence. There is also a bike shelter for cyclists to park in.

Please refrain from letting dogs loose in these areas and pick up any mess without fail - keep the area nice for all!

SLINFOLD CONCERT BAND

Slinfold Concert Band was formed in 1979. Originally Slinfold Brass, it became a Concert, or Wind Band, a few years later, and moved into the Village Hall when it outgrew the house where the founder members used to meet.

It rehearses there every Tuesday evening, with forty-plus players regularly attending. Over the years the Band has grown in both size and reputation, to become one of the busiest and best regarded concert bands in the South East.

The Band plays regularly on public bandstands, in concert venues, at fetes and at corporate and private functions. The Band is also pleased to support charity fundraising events throughout the area and has a proud tradition of playing in support of organisations within the local community. The Band became a registered charity in 2015.

The Band has access to a large and growing library of both ensemble and solo pieces and can produce a programme to suit all occasions.



If you are interested in booking the Band, please see our website for details, or speak to our Chairman.

Christopher Newport, who was appointed Musical Director in 2012, is a freelance professional musician who has played with many leading orchestras, opera and ballet companies throughout the UK. He works as a brass teacher in Sussex and conducts the West Sussex County Youth Orchestra.

The Band is proud to be associated with the village in which it was formed and is pleased to support Slinfold Village Day 2023.

www.slinfoldconcertband.org



Upcoming projects for the Environment and Recreation Committee

You will see a lot of the Parish Council activities are organised by this committee, under the chairmanship of Jane Slipper, and they have a very busy agenda!

The latest project for this team is to update the Six Acres play area, which will hopefully be completed in the Summer of 2023. Look out for invites to a grand opening ceremony when it is ready!



NEWS FROM SLINFOLD CRICKET CLUB

All being well, by the time you read this, our village's new pavilion is open for business. After 19 years of hard work, we finally have a 'state of the art' facility, adjacent car park, new ground equipment shed, and new access road. We even have a new address of Slinfold Cricket Club, Wicket Gardens, RH13 0BP!

We hope you'll come and visit us very soon, perhaps on the popular Family Fridays when the bar and barbecue are in full flow alongside junior coaching for every school year from Reception up to Year 11.

A further exciting development for the Club is the launch of our Women's Soft Ball Team. Practice is at 18:30 on Wednesday evenings and we have matches against local teams throughout the Summer. The focus of this team is to be fun and inclusive with no need for any equipment or experience. There is no expectation for anyone to be there every week so, if you'd like to give it a try, either just pop down to the club one week, or get in touch via the website at www.slinfoldcc.co.uk/womens.html

Here a few facts about our new pavilion:

- 300 square metres' footprint over two floors (old pavilion was 120 m2)
- 5 changing rooms (home, away, ladies / youths, umpires and disabled)
- 9 shower cubicles and 11 lavatories
- Social areas, bar, and kitchen areas twice the size of the old pavilion
- Viewing gallery on first floor
- Broadband wi-fi connection points
- Electronic Point of Sale system for bar and food sales
- 24 dedicated car parking spaces
- Statement, traditional clock, visible from across the ground.

Matt Camp, Slinfold Cricket Club

Welcome To All New Residents!

Welcome to all the new residents who are moving into The Acres, behind the cricket field.

We hope you grow to love the Parish as much as we do!

Slinfold Map

The Parish Council produced this map, which you can find around the Parish, depicting our key landmarks, walks and facilities. How lucky we are to live in such a fantastic area!



2022 CHRISTMAS EVENTS

SPONSORED BY THE PARISH COUNCIL



In 2022, Christmas celebrations started with a wonderful Christmas tea party and film show. We invited local senior residents and friends along for the tea in the Village Hall and enjoyed watching 'Grease', which brought back memories for many of their own youth! Thank you to all the helpers with this event - everyone enjoyed it very much and we appreciated the support.

Another great event was the Christmas Carols and Tree Lighting Ceremony, outside the Village

Stores - thank you to Slinfold Concert Band for the accompaniment, the church for the loan of the carol sheets and the Village Stores for the mulled wine and mince pies. Santa made an appearance, to the delight of the youngsters, and gave out sweets and good cheer! Thank you to Santa for making time in his busy schedule!

By this time, the houses were all beautifully decked ready for 'Tinseltown' and the judging. We had a lovely time driving around the Parish and there were

some very worthy winners! See the other article for an update on next year's plans!

The Christmas trail started with the school holidays and many children completed the trail to receive their special treat from the Village Stores, before the real celebrations began!

We hope you all had a lovely Christmas, and we welcome new ideas on how to celebrate as a Parish!

Tinseltown Or Sparkling Slinfold?

We decided to run a 'Tinseltown' competition in 2022, in recognition of the rising costs of electricity and suspected (understandable) reluctance to adorn houses with Christmas lights. It seems that our Parishioners were undeterred and enjoyed lighting up the area as much as possible! So 'Sparkling Slinfold' looks set to return!

Thinking ahead to Christmas 2023, we would like to invite new judges to join in (including a new child judge, as our previous one is growing up!) and also let you know that 2023 participation will be by application (so we know which houses are really going for it!). Look out for the invitation to apply later in the year!

Please contact Councillor *Jane Slipper* if you would like to get involved.

Slinfold Parish Magazine

Slinfold Magazine is published monthly and, in addition to being available for purchase (currently 60p) at the Village Shop and the church, is distributed throughout the parish by a network of volunteers.

The magazine contains a diary of events, a directory of village organisations with contact numbers, a selection of adverts for services, and articles from village organisations and individuals about events and matters of local interest. If you would like the magazine delivered to your door, there is an annual subscription which represents a saving on paying monthly. Please contact slinfoldmagazine@gmail.com for further information.

If your organisation is currently not listed in the magazine, or if you have a business and would like to advertise, please let us know! Any profits from the magazine, after paying for professional printing, go to the church - so by subscribing to the magazine you are helping to keep the church open!

Mandy Higgs, Slinfold Magazine



Children's trails in the Parish

The Parish Council are pleased to sponsor the Christmas and Easter trails which guide children around the village loop, in return for a small treat from the Village Stores. We hope you are enjoying the trails! We would love to hear from anyone who would like to help set up the trails or start one for another season.

Please contact Councillor *Jane Slipper* if you would like to get involved.

Don't forget the village car park

Please do remember that, outside of school hours, the school car park is a village car park - so please do use it and encourage visitors to use it.

There are about 20 spaces, and it is well lit.

CORONATION VILLAGE DAY

What a lovely sunny day for the Coronation Village Day in Slinfold Parish! The Parish Council team really pulled together a packed agenda for everyone - led by the inexhaustible Jane Slipper, Adrian Roberts and their enduring team of volunteers!

The Slinfold Indoor Market branched out to the streets and we were entertained all day by various musical acts, pony rides, dog show and tug-of-war, and fed and watered by food and bar vans at the Red Lion as well as multiple opportunities to buy cake. Well done to the fun runners, bakers and pet owners for adding extras to the busy day, and thank you all who came along.

Nic Lewis, Editor



The day would not be successful without the people there - it is always lovely to have the chance to meet up with our fellow Parishioners and enjoy the sun in the setting of our beautiful village centre.





THE BEST WOODLAND WALKS AROUND SLINFOLD



If you enjoy the great outdoors there can be few more beautiful places than West Sussex in the spring and early summer.

And if you are out and about at the right time you may also see the woods full of bluebells for a few weeks.

As an avid walker, runner and cyclist I tend to get out and about a fair bit and so find a few fantastic spots and some beautiful woodlands. Here is a selection of some local woods which are lovely at any time of the year but are particularly good in spring when the ground is a bit drier, and the bluebells are (hopefully) out.

I've added a 6-figure grid reference for use with Ordnance Survey maps as well as the relevant code for the What3words app which gives you a unique description for every 10m2

space in the UK so there are no excuses for not being able to find these.

I hope this is useful - please remember not to step onto or pick the bluebells or they won't be as magnificent in years to come and if you have any problems with paths, signage or stiles then please report it to West Sussex County Council either via their website or on the Love Clean Streets app for smartphones.

David Estyn-Jones



1 Unnamed wood, West of the Park Street and A29 junction. There are two easy ways to get to this small wood which is about a mile from the village centre. The first way is to go along the Downs Link towards Rudgwick, under the A29 tunnel, and then turn right up onto the path when you get to the next bridge. You can also walk west out of the village on Park Street and cross straight over the A29. **Ordnance Survey Grid Reference 107 316 or What3words 'wrenching.ballparks.crowned'**

2 Whales Copse is a larger wood about half a mile to the north of Wood #1. You can reach it from #1 by heading down the hill northwards on the footpath then up to the top of the next cow field. Keep on the same path and head down towards

Dedisham Farm for about 300m before bearing north-west on a path across the next field. This path takes you through a smaller wood until you arrive at the larger Whales Copse. **OS GR 105 324 or What3words 'compose.proofs.innovate'**

3 Tittlesfold Copse is part of a large wood to the West of Slinfold Golf and Country Club. From the village head out on the Downs Link, under the A29 then at the next bridge go up and to the left, through a large metal gate and onto what looks to be a private road (also a bridleway). Follow this for half a mile or so past a house called Kilsyth with the golf course on your left. As you get to the bend in the road near the entrance to Park Farm head left onto the golf course, turn right and follow the path

on the right-hand edge down the hill before turning off to the right following the path. This leads down to a footbridge over a stream and into a lovely, shaded area. **OS GR 096 311 or What3words 'flats.unzipped.twit'**

4 Cooks Lane is the last of the four sites and is on the other side of the village between Rapkyns Care Home, Farlington School and Nowhurst Lane. Go up to Nowhurst Lane which you should follow north-east before turning back south just after Smithawe Farm. Cooks Lane leads along to Rapkyns and the whole lane can be full of bluebells and wild garlic in springtime. You can return via Theale Farm and either back to Lyons Road or via the cricket pitch. **OS GR 134 324 or What3words 'protest.shopping.gentlemen'**



New Tree In The Queen's Canopy

On 22nd March 2023, Rother Class from Slinfold CE Primary walked to the green in Slinfold. Once they arrived, they met members of the Parish Council and helped to plant a Mulberry Tree. They did this so that they could remember the Queen and celebrate her jubilee. We will always remember the Queen and her reign of over 70 years.

Slinfold CE Primary School



HIGHWAYS AND BYWAYS COMMITTEE

Slinfold Parish Council aims to represent the interests of the residents of the parish as a whole and to preserve the environment for the enjoyment of the parishioners, visitors and future generations.

The Council is responsible for a range of services and works in partnership with County and District Councils as well as local village organisations.

The Councillors and the Clerks cover many duties for the Parish and for this they are split into many sub-committees, such as Planning, Finance and Environment & Recreation. In this newsletter, we are focusing on the Highways and Byways Committee:

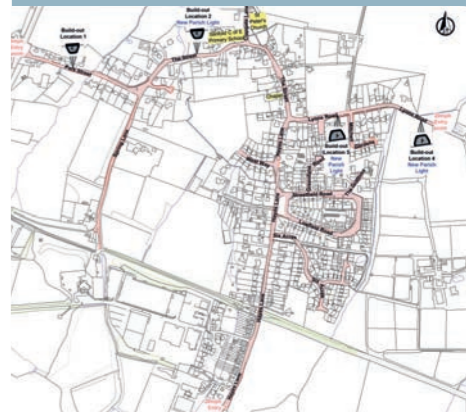
The Highways & Byways Sub-Committee's primary responsibility is to consider the Parish's interests in relation to its roads and footpaths, and to seek to influence residents and other stakeholders to maintain safety and take pride in the wonderful look and feel of our rural parish.

With too many achievements to list here, recent work of this sub-group has included the uplift of village signage, gateways and entrances, together with the introduction of a village map; all with a view of raising the street-scene and promoting our beautiful village and its cherished facilities (such as the pub, shop and village clubs etc).

Additionally, this sub-group has delivered a successful Community Traffic Scheme application and attained a grant to improve drainage in Hayes Lane.

As with the main Parish Council, this sub-group continues to welcome innovative ideas that might promote its values, so if any readers have any thoughts on this subject, then please don't hesitate in raising them in the first instance through the Parish Clerk or one of the councillors.

*Cllr Adrian Roberts,
Outgoing Chair of the
Highways & Byways Committee*



WSSC have advised that the construction of the scheme will therefore be delayed until the summer holidays of 2023. This decision was made to ensure the works can be completed safely and without disruption to school transport.

Once the construction has been completed, the 20mph speed limit will be implemented. The map illustrates the extent of the scheme throughout the village.

Cllr Chris Leyland



Summer smoke nuisance from bonfires

Having a garden bonfire almost anywhere in the Horsham District is likely to be seen as anti-social by many residents. Please do not have garden bonfires. Not only are they anti-social, they are also not the best environmental option and produce pollutants that are damaging to human health. There are always more responsible alternatives than burning garden waste.



It is an offence to cause a statutory nuisance from regular bonfires. Persistent offenders could be prosecuted by the Council and be fined up to £5000.

If you want to report a nuisance from a neighbour's bonfire, please contact HDC :

- Email publichealth.licensing@horsham.gov.uk or call on 01403 215641 or write to Environmental Health and Licensing, Parkside, Chart Way, Horsham, West Sussex, RH12 1RL.
- Please include details of the source of the smoke, how long it has been going on for, how it has affected you, and your name and contact details. An officer will then contact you during office hours.

Rather than burning your rubbish in a bonfire, use the following options to dispose of it:

- Take your rubbish to your nearest Household Waste Recycling Site.
- If you need to get rid of garden waste regularly, sign up to the garden waste service.
- For a one-off collection, consider the Bulky Bag service.
- Compost your garden waste. West Sussex Waste Partnership sell subsidised compost bins for £15.

Do You Have A Natural Water Source Near Your Home?

If you have a watercourse, ditch, stream, river or culvert on or next to your land you are known as a 'riparian owner'. Riparian owners are responsible for the maintenance and upkeep of watercourses on their land to ensure that they are not a flood risk to other people or property. Well maintained watercourses can significantly benefit the local community by reducing flood risk and creating habitats for wildlife.

Further information is available via the website and if you have a particular question relating to Operation Watershed:

Visit: www.westsussex.gov.uk/watershed
Or email: operation.watershed@westsussex.gov.uk

Don't tolerate it, report it

Residents often contact the Clerk about problems around the Parish, which they duly forward to the relevant authority.

Please be aware that problems can also be reported directly to either Horsham District Council (for matters such as dog fouling, problems with the Acorn Plus scheme, fly tipping or fly posting, full litter or dog litter bins) or West Sussex County Council (for matters such as potholes, dangerous footpaths, hedges encroaching on WSCC's highways or footpaths, blocked drains) etc.



**NO DOG
FOULING**

CONTACT DETAILS

LOCAL AUTHORITY NUMBERS

Horsham District Council
01403 215100,
Email: contact@horsham.gov.uk
Or visit: www.horsham.gov.uk

West Sussex County Council
Email: 01243 777100
Or visit: www.westsussex.gov.uk

West Sussex County Council (Highways)
Email: 01243 642105
Or visit: love.westsussex.gov.uk



We are delighted to announce that F&W Networks, the network installer looking to implement a fibre network in Slinfold, in connection with Building Digital UK (BDUK), have, as of 20th April, received 229 registrations of interest in fibre broadband. This is great news, and it clearly demonstrates that more and more people are recognizing the enabling benefits of fibre broadband.

The BDUK voucher scheme is a government initiative that provides financial support to eligible households to upgrade their broadband connectivity. This program aims to improve the broadband infrastructure and promote economic growth in rural areas.

Fibre is the latest innovation in internet technology and has revolutionized the way we access the internet. It uses fibre-optic cables to transmit data at high speeds and over long distances, resulting in a faster and more reliable internet connection.

Here are some of the advantages:

- **Speed** - Fibre broadband offers significantly faster speeds than traditional broadband, which means that you can download large files, stream movies and play online games without buffering.
- **Reliability** - again, unlike traditional broadband, fibre broadband is less prone to interruptions and outages. This means that you can rely on a consistent and stable connection.
- **Future-Proof** - fibre broadband is built to last, and it is designed to accommodate the ever-increasing demand for high-speed internet. This means that you won't have to worry about upgrading your internet connection again.
- **Multiple Users** - fibre broadband can support multiple users simultaneously without any drop in speed. This is particularly useful for households with multiple devices.
- **Scalability** - fibre broadband is highly scalable, which means it can be easily upgraded to meet the growing demands of your business or household. This makes it a future-proof investment.
- **Symmetrical Speeds** - unlike traditional broadband, which usually has slower upload speeds than download speeds, fibre broadband offers symmetrical speeds, which means you can upload files just as quickly as you can download them.

If you have not yet registered your interest in fibre broadband, we encourage you to do so as soon as possible. This is a fantastic opportunity both for residents and the village to upgrade internet connections and enjoy all the benefits that fibre broadband has to offer.

To register your interest in fibre broadband, simply visit the F&W website or contact their customer service team. They will be happy to answer any questions you may have and guide you through the registration process.

Clr Chris Leyland

Slinfold Fibre (slinfold-fibre.info) Email - contact@slinfold-fibre.info



Small Grants

The Parish Council has a small fund for helping local groups and organisations. Details of our grants policy and an application form can be found on our website at www.slinfold-pc.gov.uk.



Love West Sussex

IF YOU AREN'T HAPPY WITH IT, REPORT IT!

HOW DOES IT WORK?

The site allows you to review and submit environmental issues and have Love West Sussex deal with it, and then let you know how they got on www.love.westsussex.gov.uk/





YOUR PARISH COUNCIL

For further information visit the Parish Council website www.slinfold-pc.gov.uk or email: clerk@slinfold-pc.gov.uk

ENVIRONMENT OFFICERS

Tim Harrison and John Pilkington are out and about in the village on a regular basis.

If you are concerned about a particular area that needs attention please email: eo@slinfold-pc.gov.uk or call the Clerk on 07894 858048.

CHAIRMAN

Adrian Roberts

a.roberts@slinfold-pc.gov.uk

PARISH COUNCILLORS

Christopher Casdagli

c.casdagli@slinfold-pc.gov.uk

Christopher Leyland

c.leyland@slinfold-pc.gov.uk

Hilary Sherwin-Smith

h.sherwin-smith@slinfold-pc.gov.uk

PARISH COUNCILLORS

Jane Slipper

j.slipper@slinfold-pc.gov.uk

Nigel Smith

n.smith@slinfold-pc.gov.uk

Paula Smith

p.smith@slinfold-pc.gov.uk

Janet Walker

j.walker@slinfold-pc.gov.uk

Vincent Pyle

v.pyle@slinfold-pc.gov.uk

DISTRICT COUNCILLORS

Patricia Youtan

tricia.youtan@horsham.gov.uk

Kasia Greenwood

kasia.greenwood@horsham.gov.uk

COUNTY COUNCILLOR

Christian Mitchell

christian.mitchell@westsussex.gov.uk



Money Matters

The Parish Council's annual accounts from 2022-23 are available on our website www.slinfold-pc.gov.uk under 'Accounts'.

The accounts detail all income and expenditure for the financial year.

Don't Be An Anti-Social Parker!

Please may we remind residents that it is anti-social to park wholly or partially on a pavement / grass verge / public open space.

Parking on the pavement obstructs and seriously inconveniences pedestrians, people in wheelchairs or with visual impairments, and people with prams or pushchairs.

In many areas of the village, parking on the pavements forces pedestrians and other pavement users to move into the road which is not acceptable as our village roads are narrow and busy.

It is also anti-social to park fully on grass verges and public open spaces - we are keen to protect our environment and also keep it looking its best!



23

Parish Council Meetings

Meetings are open to the public and the press (who have a right to attend) and are preceded by a session for public comments. Council meetings take place usually in the Parish Room at the Village Hall.

Visit our website at www.slinfold-pc.gov.uk for agendas and minutes of previous meetings or view these documents at the notice board at the bus shelter in The Street, or in the Village Shop.

FULL PARISH COUNCIL MEETINGS: JUNE-DECEMBER 2023

| | |
|----------------------|--------|
| Thurs 29th June | 7:30pm |
| Thurs 27th July | 7:30pm |
| Thurs 28th September | 7:30pm |
| Thurs 26th October | 7:30pm |
| Thurs 30th November | 7:30pm |
| Thurs 21st December* | 7:30pm |
| * Subject to change | |