

Slinfold Parish Council

Inside this Summer 2021 edition

Chairman's Report	2
Parish Council Projects	3-4
Clerk's Corner	5
Your Parish Council	6

Welcome to the summer issue of Parish Council News for 2021. This newsletter is delivered to every household in the Parish (around 900) and aims to keep all residents in touch with matters that may be of interest, including Parish Council activity and forthcoming meetings.

If you have something that you would like to see in the next edition, which will come out just before Christmas in December, please contact the Parish Clerk (contact details are on the back page).

ALL SLINFOLD PARISH RESIDENTS WELCOME!

COME ALONG!

VILLAGE DAY

★ ★

SUNDAY 12TH SEPT 2021

★ ★

★ CREAM TEA IN THE VILLAGE HALL ★

CAKES FOR SALE ★ SLINFOLD CONCERT BAND

DOG SHOW ★ ICE CREAM ★ FACE PAINTING

★ FUN AND GAMES IN THE CHILDREN'S AREA ★

TUG OF WAR (TEAM ENTRIES REQUIRED) ★ RAFFLE

STALLS IN THE STREET ★ TOMBOLA ★ HOG ROAST

★ TANK AND HISTORY EXHIBITION ★

★ AND LOTS MORE!

★ 12th SEPT | 12-6pm ★

★ THE STREET AND THE RED LYON ★

Made with PosterMyWall.com



Chairman's report *by Chairman Neil Beer*



Neil Beer

Until May this year, the Parish Council has continued to meet and to progress matters virtually – but starting with our May Annual Council meeting, we are required to hold public

meetings once again in person. At the time of writing, the Parish Council meets downstairs in the Village Hall, which can accommodate about 30 people, consistent with present Government guidelines. When allowed by relaxing guidelines, the Council intends to revert to meeting in the upstairs Parish Room where there is more IT technology available to include projection facilities.

Considerable progress has been made on construction at Spring Lane and at Welwyn. I believe that new residents have already moved into some of the houses at Welwyn; Welcome all to the parish.

Planning applications for the Crosby Farm site (land north of the cricket field) have generated considerable controversy

and some ill-feeling. The detailed application was decided by Horsham District Council on 6th July. The Committee resolution was to delegate to the Head of Development, subject to completion of a legal agreement and amendments to plots 1-6 (including ridge heights) and to consider conditions. There will be no further public consultation on the application.

I hope that the tensions caused by it will reduce and that any strained relationships will settle down. The Parish Council, as always, has and will continue to pursue the best possible outcome for all sites that come forward for development in the parish.

We have recently seen revised plans for the redevelopment at The Cobblers, which now helpfully includes an outline application for the replacement of the Scout Hut on its present site. I hope that The Cobblers development will move ahead quickly – the present boarded-up buildings are a bit of an eyesore!

As I write, new play equipment has been installed in the KGV field adding to the existing range of equipment and replacing some that was reaching the end of its safe



and useful life. The play surfaces have also been upgraded. When safety checks are complete it is hoped that the area will re-open in time for the school holidays.

The Youth Club restarted in May, which is great to see, and has had excellent attendance. As Covid restrictions relax, I'm sure that more activities can be added. There are many other projects underway, details of which are included in this newsletter. Do drop me a line if you have an idea to improve the parish for the benefit of the community.

The Village Day on Sunday 12th September (see poster) is partly to replace the VE Day celebrations which had to be cancelled, but hopefully will also celebrate a return to "normal" (whatever that is now). Please come along if you can.

Wishing you and your families a good summer.

Neil Beer, Chairman

MONEY MATTERS

Annual Accounts to 31 March 2021

The Parish Council's annual accounts to 31 March 2021 have been signed-off by our internal auditor Mulberry & Co and are available on our website www.slinfold-pc.gov.uk under "Accounts". The accounts detail all income and expenditure for the financial year.



Hedges and Overhanging Vegetation

It is that time of the year again so next time you step outside onto the public footpath from your home please take the opportunity to see if your hedge overhangs a footpath or road. Look upwards too; are there low level

overhanging branches which could cause head injury or are blocking road signs? You run the risk of formal notice from the County Council if you fail to keep overhanging vegetation under control, and could even face legal action from an injured member of the public. If branches or hedges are overhanging please make arrangements to have them cut, just double check first to make sure birds are not still nesting. Thank you.

SMALL GRANTS

The Parish Council has a small fund for helping local groups and organisations. Details of our grants policy and an application form can be found on our website at www.slinfold-pc.gov.uk





Facelift coming soon for the entrances to the village

We are delighted to advise that the Parish Council has approved the purchase of replacement gateways for Park Street and Lyons Road as well as new gateways at the entrance to Hayes Lane from the A29. We also have some new village signs (see sign).

Park Street will also benefit from a specially designed planting scheme. We are very lucky to be working with Harrie Carnochan, MCIHort who lives in Slinfold. Harrie has designed for the Chelsea Flower Show and we are very grateful to Harrie for designing a lovely low level scheme at the Park Street entrance.



Stipa tenuissima



Salvia caradonna



Hebe 'Green Globe'



Rudbeckia 'Little Goldstar'



Hakonechloa macra



Berberis 'Orange Rocket'

New Trees

At least 16 new well-established trees will be planted late autumn around the parish as part of a West Sussex County Council 'plant a tree scheme' WSCC will stake and feed these trees for a good few years but water is essential when first planted so please if you spot a new tree close to your home, pop out and give it a drink (of water of course!)



KGV Play Area

We re-opened the play area on Saturday 24th July and hope that you were able to join in the celebrations. Please take the kids along and enjoy this fabulous parish facility, it has some amazing play equipment for all ages.



Gigabit Broadband

Again, thank you to all that have expressed an interest in this. The quotes so far received from Openreach have been unworkable as they had included properties that had not registered an interest and also included a number of nursing homes, including individual rooms within those, where there was no requirement for faster broadband. Bringing in those additional properties pushed the cost beyond that covered by the available vouchers. Openreach have agreed to look again at how faster broadband can best be delivered within the parish and we continue to liaise with them around how it can best be achieved.

Community Shed

Many residents will recall that we were looking at the possibility of introducing a man shed to the parish and there was quite a bit of interest in this but we were not really able to pursue this as quickly as we would have like due to the pandemic. Others have come forward suggesting that the shed could be multi-purpose so we are now looking at extending this to be a 'community shed' sub-divided between perhaps wood and metal working and arts and crafts. This will provide opportunities for the people in the parish to meet up and enjoy each other's company again. The building will be a place to pursue practical interests at leisure, to practice skills and enjoy making and mending. The shed is about promoting social connections and friendship building, sharing skills and knowledge, and of course a lot of laughter.

We are in the process of obtaining quotes and need to agree a location for the shed but in principle the Parish Council has agreed that this will be in our community space at Cherry Tree. There are still many decisions to be taken as to the exact location, types of windows and roof pitch etc. and there is an up to six month wait for delivery. We shall update you again in our December newsletter and on Facebook.

Traffic Calming Scheme

The application for traffic calming within the village and approach roads scored the points needed to progress to the funding and eventually implementation stages. This is at least two years away but there now appears to be some certainty around some future traffic calming measures being implemented in the parish. We continue to monitor both the speed and volume of traffic through the village via data supplied by WSCC Highways.

Village Map and Walks

Our village map has been published and is now being widely distributed around the village. Slinfold Village Stores is also selling tea towels as a keepsake or souvenir with the map on and very popular they are too! We can't print it here in its full glory so go to the Parish Council website where you can print off your very own copy.

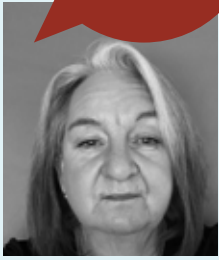


Operation Watershed Grant

The Parish Council applied for an Operation Watershed grant back in 2019. This was to address the flooding issues in Hayes Lane and involves work on the trash screens, re-establishing ditches on the upper section of Hayes Lane and work to increase the size of outlet pipes from the road gullies at the outfall of the Hayes Lane system. Contractor quotes have now been obtained and we await the outcome of the funding decision from West Sussex County Council.



Clerk's Corner



I can't believe that it is 16 months ago that I was panicking about not getting home from our holiday in Egypt. As I work mostly from

home, isolation hasn't been too much of a change for me but I have missed meeting up with my council colleagues and visiting the parish to progress projects with contractors and other local authorities, that has eased of late and it is good to start to meet in person once again.

What has changed for me is arranging alternatives to meeting in person and we have been in the 'virtual' mode for over a year now. In May we started meeting again in person and the hope is that this will continue as Boris lifts restrictions this month.

As always, there are lots of articles in this newsletter highlighting the good work that the Parish Council does and we could not achieve that

without the great ideas, dedication, time and hard work that councillors give on a voluntary basis to help make Slinfold the wonderful parish that it is. We should thank them all and our Environment Officers, Tim and John for their commitment and contribution to making Slinfold the lovely parish that it is.

We do have a councillor vacancy to fill at the moment and have a wait list but if you would like to get involved in parish life and make a difference in the future, why don't you let me know that you are interested in becoming a councillor and I shall send you some details!

If you would like to talk about any concerns relating to a parish matter, I visit Slinfold several times during the month and am always very happy to meet up and discuss any issues that you may have. We can now meet again at the Parish Office which is at the football pavilion, Cherry Tree. Just call me to make an appointment on 01403 785864.

*Your clerk
Mary*

WSSC Awareness Initiative for Riparian Owners

If you have a watercourse, ditch, stream, river or culvert on or next to your land you are known as a 'riparian owner'. Riparian owners are responsible for the maintenance and upkeep of watercourses on their land to ensure that they are not a flood risk to other people or property. Well maintained watercourses can significantly benefit the local community by reducing flood risk and creating habitats for wildlife.

The riparian responsibilities for landowners under law are to:

- Ensure the flow of water is not obstructed or polluted
- Maintain the bottom and sides of the watercourse (including managing any trees and vegetation growing on the banks)
- Remove any obstructions, such as rubbish, fallen branches or garden waste
- Maintain any structures (such as trash screens, culverts, weirs and mill gates) on it.

If you have a particular question relating to Operation Watershed please visit www.westsussex.gov.uk/watershed or email: operation.watershed@westsussex.gov.uk

Employment Opportunity at Slinfold CE Primary School and Pre-school



The Governors of Slinfold School are looking for an organised person to clerk our 'Full Governing Body' meetings. This is a paid, flexible role and we are looking for an efficient and effective person to help support us and ensure we are fulfilling our legal responsibilities. Our FGB meetings take place in the afternoon/evening during term-time, approximately six times a year, with potentially some adhoc meetings that also require minuting.

The Clerk is responsible for preparing and distributing the agenda, taking minutes and distributing them and providing professional support to Governors.

Some experience in this type of work will be an advantage, but not essential, as training will be provided.

Currently all our meetings are via Zoom, but we hope to resume face to face meetings when restrictions allow.

Please email the Chair of Governors, Sarah Elphick, selphick@slinfold.w-sussex.sch.uk for further information or to apply.

If you are looking for more hours, we can put you in touch with other local schools and you may be able to combine the positions for a fuller role.

HELP US KEEP THIS COMMUNITY ASSET RUNNING BY HIRING IT, AND MAYBE EVEN JOINING THE COMMITTEE!

SLINFOLD MINIBUS CLUB



Holds 16 passengers + driver

JOIN THE MINIBUS CLUB!

Need an affordable, self-drive option for transporting your friends / family / sports team / community group?
Use the Slinfold Minibus!

It's Easy :

- ✓ Contact the Minibus Club Committee
- ✓ Submit an application to join
- ✓ Pay a one-off joining fee (Hirer tariffs and fuel costs apply)
- ✓ Get familiarised with the minibus and you are on your way!

Insurance and breakdown cover included

CALL THE MINIBUS CLUB NOW! 07833 321809

Your Parish Council

For further information visit the Parish Council website www.slinfold-pc.gov.uk

Clerk and Financial Officer:
Mary Burroughs

PO Box 315
Billingshurst,
West Sussex RH14 9XX

Telephone: 01403 785864
Mobile: 07733 359479
Email: clerk@slinfold-pc.gov.uk

Environment Officers:

Tim Harrison and John Pilkington are out and about in the village on a regular basis. If you are concerned about a particular area that needs attention please Email: eo@slinfold-pc.gov.uk or call the Clerk on 01403 785864

Chairman:

Dr Neil Beer

n.beer@slinfold-pc.gov.uk
Tel: 01403 241271

Parish Councillors

Dr Neil Beer

n.beer@slinfold-pc.gov.uk

Christopher Casdagli

c.casdagli@slinfold-pc.gov.uk

David Estyn-Jones

d.estyn-jones@slinfold-pc.gov.uk

Christopher Leyland

c.leyland@slinfold-pc.gov.uk

Adrian Roberts

a.roberts@slinfold-pc.gov.uk

Hilary Sherwin-Smith

h.sherwin-smith@slinfold-pc.gov.uk

Edward Skeates

e.skeates@slinfold-pc.gov.uk

Jane Slipper

j.slipper@slinfold-pc.gov.uk

Paula Smith

p.smith@slinfold-pc.gov.uk

Gael Stenton-Chandler

g.stenton-chandler@slinfold-pc.gov.uk

There is one vacancy. For more information please contact the Clerk

District Councillors

Patricia Youtan

tricia.youtan@horsham.gov.uk

Stuart Ritchie

stuart.ritchie@horsham.gov.uk

County Councillor

Christian Mitchell

christian.mitchell@westsussex.gov.uk

Don't tolerate it, report it

Residents often contact the Clerk about problems around the village, which she duly forwards to the relevant authority. Please be aware that problems can also be reported directly to either Horsham

District Council (for matters such as dog fouling, problems with the Acorn Plus scheme, fly tipping or fly posting, full litter or dog litter bins) or West Sussex County Council (for matters such as pot holes, dangerous footpaths, hedges encroaching on WSCC's highways or footpaths, blocked drains) etc. The contact details are:

Local Authority Numbers

Horsham District Council

01403 215100

or visit www.horsham.gov.uk

West Sussex County Council

01243 777100

or visit www.westsussex.gov.uk

West Sussex County Council (Highways)

Call 01243 642105 or visit

www.westsussex.gov.uk/roads-and-travel alternatively go to

love.westsussex.gov.uk

West Sussex County Council

(Public Rights of Way)

prow@westsussex.gov.uk



Parish Council Meetings

Meetings are open to the public and the press (who have a right to attend) and are preceded by a session for public comments. Council meetings take place usually in the Parish Room at the Village Hall. Visit our website at www.slinfold-pc.gov.uk for agendas and minutes of previous meetings or view these documents at the notice board at the bus shelter in The Street, or in the Village Shop.

FORTHCOMING MEETINGS SEPTEMBER-DECEMBER 2021

Date	Meeting	Starting at	Venue
Thurs 2 Sept	Highways & Byways	6:30pm	Please check website
Thurs 2 Sept	Recreation & The Environment	7:30pm	Please check website
Thurs 30 Sept	PARISH COUNCIL	7:30pm	Village Hall
Wed 20 Oct	Finance	7:00pm	Please check website
Thurs 28 Oct	PARISH COUNCIL	7:30pm	Village Hall
Thurs 4 Nov	Highways & Byways	6:30pm	Please check website
Thurs 4 Nov	Recreation & The Environment	7:30pm	Please check website
Wed 24 Nov	Finance	7:00pm	Please check website
Thurs 25 Nov	PARISH COUNCIL	7:30pm	Village Hall
Thurs 23 Dec (tbc)	PARISH COUNCIL	7:00pm	Village Hall